

# Stationary Gensets

H32/40 I Bore: 320 mm, Stroke: 400 mm

## Main Data

Speed	720 rpm		750 rpm	
	60 Hz		50 Hz	
Frequency	Eng. (kW)	Gen. (kW)	Eng. (kW)	Gen. (kW)
6H32/40	3,000	2,880	3,000	2,880
7H32/40	3,500	3,360	3,500	3,360
8H32/40	4,000	3,860	4,000	3,860
9H32/40	4,500	4,342	4,500	4,342

Based on alternator efficiency of 96~96.5 %.

## Specific Fuel Oil Consumption

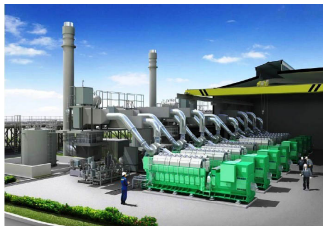
Load	720 rpm	750 rpm
100%	178 g/kWh	180 g/kWh

\*) Note :

- 1) Reference condition based on ISO 3046/1
- 2) Fuel oil based on LCV(Lower Calorific Value) 42,700kJ/kg
- 3) NOx Emission limitation : IMO Tier II

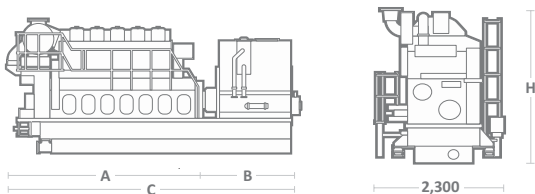
## Specific Lubricating Oil Consumption

Lub. Oil: 0.5 g/kWh



## Dimension & Weight

	Dimension (mm)				Dry mass (ton)	
	A	B	C	H	Engine	GenSet
6H32/40	5,055	3,490	8,545	3,759	33.7	65.2
7H32/40	5,545	3,490	9,035	3,882	38.6	72.6
8H32/40	6,035	3,785	9,820	4,132	41.5	78.6
9H32/40	6,525	3,685	10,210	4,132	44.6	82.7



### Remarks

- 1) Depending on alternator.
- 2) Without common base frame.
- 3) With common base frame & alternator (Maker: Hyundai Electric).

Note) All dimensions and weight are approximate value and subject to change without prior notice.