

Dual Fuel Generator Sets

H35DFV I Bore: 350 mm, Stroke: 400 mm

Main Data

Speed	720 rpm		750 rpm	
Frequency	60 Hz		50 Hz	
	Eng. (kW)	Gen. (kW)	Eng. (kW)	Gen. (kW)
12H35DFV	5,760	5,558	5,760	5,558
14H35DFV	6,720	6,518	6,720	6,518
16H35DFV	7,680	7,449	7,680	7,449
18H35DFV	8,640	8,380	8,640	8,380
20H35DFV	9,600	9,312	9,600	9,312

Based on alternator efficiency of 96.5~97 %.

Heat Rate & SFOC (100% Load)

Speed	720 rpm	750 rpm
Heat Rate@Gas mode	7,545 kJ/kWh	7,545 kJ/kWh
SFOC@Diesel mode	187 g/kWh	189 g/kWh

*) Note :

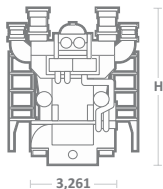
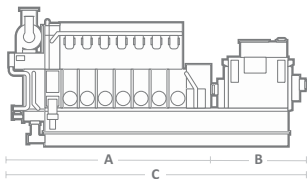
- 1) Reference condition based on ISO 3046/1
- 2) Main fuel oil based on marine diesel oil, LCV(Lower Calorific Value) 42,700kJ/kg
- 3) Fuel gas based on natural gas, Lower Heating Value 36MJ/Nm³, methane number Min. 80
- 4) NOx Emission limitation : IMO Tier II on Diesel mode, IMO Tier III on Gas mode

Specific Lubricating Oil Consumption

Lub. Oil: 0.4 g/kWh

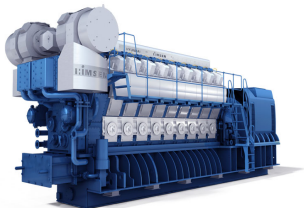
Dimension & Weight

	Dimension (mm)				Dry mass (ton)	
	A	B	C	H	Engine	GenSet
12H35DFV	6624	3760	10384	4723	58.0	110.8
14H35DFV	7295	3860	11155	4723	65.3	123.3
16H35DFV	7914	3479	11393	4723	71.1	132.9
18H35DFV	8585	3859	12444	4794	78.3	143.2
20H35DFV	9344	3659	13003	4794	86.0	155.9



Remarks

- 1) Depending on alternator.
 - 2) Without common base frame.
 - 3) With common base frame & alternator (Maker: Hyundai Electric).
- Note) All dimensions and weight are approximate value and subject to change without prior notice.



URL: <http://www.soar.hk>
 E-mail: sale@soar.hk
 Phone: +86-4008111308